

SUPER FLUX LED LAMP, 4PIN LED

BL-FL7644xx

Features:

- 7.62*7.62*4.0MM, 4MM Cylindrical, Inverted Cone SUPER FLUX LED LAMP
- Ultra brightness.
- Wide Viewing Angles.
- Ideal For Backlight and Indicator
- RoHs Compliance



■ Electrical-optical characteristics: (Ta=25°C) (Test Condition: IF=70mA)

Part Number	Chip			Lens Type	Forward Voltage(VF) Unit:V		Luminous Intensity (Iv) Unit:mcd		Viewing Angle 2θ1/2 (deg)
	Emitted Color	Material	λP (nm)		Typ	Max	Min.	Typ.	
					BL-FL7644URC	Ultra Red	AlGaAs,DDH	660	
BL-FL7644UEC	Ultra Orange	AlGaInP	630	2.10	2.50	180	900		
BL-FL7644UYC	Ultra Yellow	AlGaInP	590	2.10	2.50	300	900		
BL-FL7644UGC	Ultra Green	AlGaInP	574	2.20	2.50	400	700		
BL-FL7644PGC	Ultra Pure Green	InGaN	525	3.80	4.50	600	3000		
BL-FL7644BGC	Ultra Bluish Green	InGaN	505	3.80	4.50	500	2800		
BL-FL7644UBC	Ultra Blue	InGaN	470	2.70	4.20	500	3000		
BL-FL7644UWC	Ultra White	InGaN	/	2.70	4.20	500	3000		

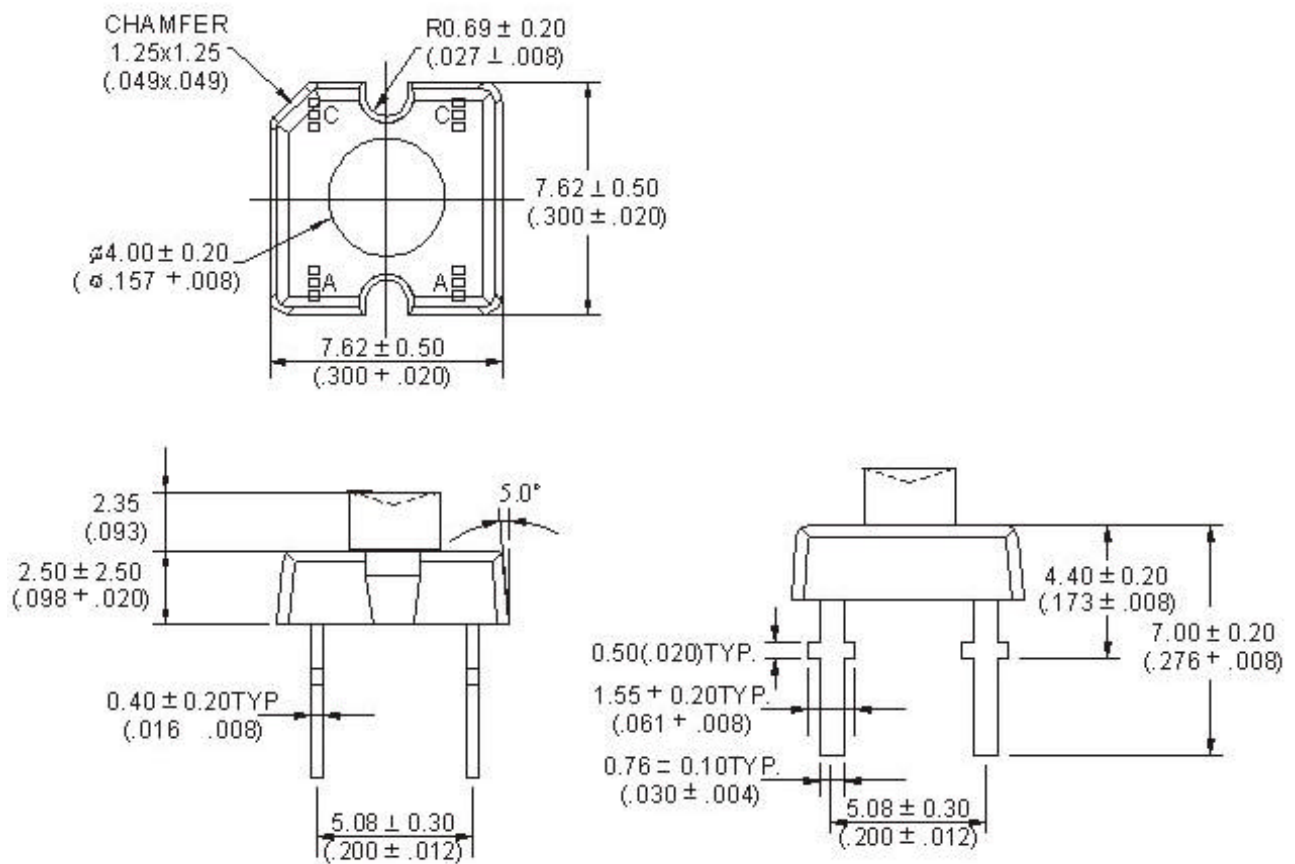
■ Absolute maximum ratings (Ta=25°C)

Parameter	UR	UE	UY	UG	PG	BG	UB	W	Unit
Forward Current I _F	25	30	30	30	30	30	30	30	mA
Power Dissipation P _d	60	65	65	75	110	110	120	120	mW
Reverse Voltage V _R	5	5	5	5	5	5	5	5	V
Peak Forward Current I _{PF} (Duty 1/10 @1KHZ)	150	150	150	150	150	100	100	100	mA
Operation Temperature T _{OPR}	-40 to +80								°C
Storage Temperature T _{STG}	-40 to +85								°C
Lead Soldering Temperature T _{SOL}	Max.260±5°C for 3 sec Max. (1.6mm from the base of the epoxy bulb)								°C

SUPER FLUX LED LAMP, 4PIN LED

BL-FL7644xx

■ **Package configuration & Internal circuit diagram**



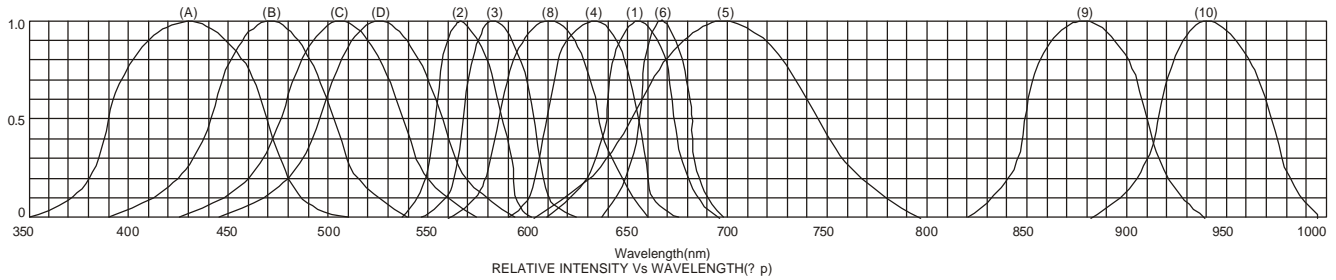
Notes:

1. All dimensions are in millimeters (inches)
2. Tolerance is ±0.25(0.01")unless otherwise noted.
3. Specifications are subject to change without notice.

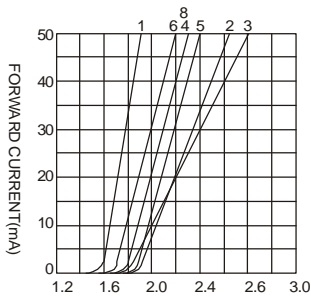
SUPER FLUX LED LAMP, 4PIN LED

BL-FL7644xx

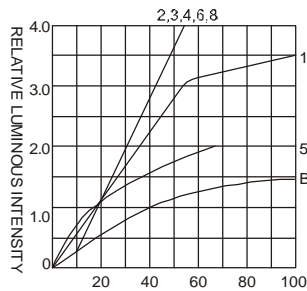
Typical electrical-optical characteristics curves:



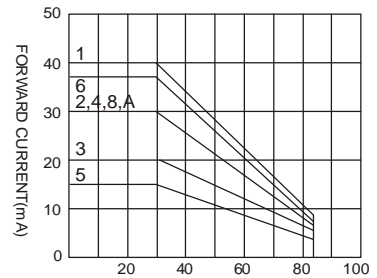
- (1) - GaAsP/GaAs 655nm/Red
- (2) - GaP 570nm/Yellow Green
- (3) - GaAsP/GaP 585nm/Yellow
- (4) - GaAsP/GaP 635nm/Orange & Hi-Eff Red
- (5) - GaP 700nm/Bright Red
- (6) - GaAlAs/GaAs 660nm/Super Red
- (8) - GaAsP/GaP 610nm/Super Red
- (9) - GaAlAs 880nm
- (10) - GaAs/GaAs & GaAlAs/GaAs 940nm
- (A) - GaN/SiC 430nm/Blue
- (B) - InGaN/SiC 470nm/Blue
- (C) - InGaN/SiC 505nm/Ultra Green
- (D) - InGaAl/SiC 525nm/Ultra Green



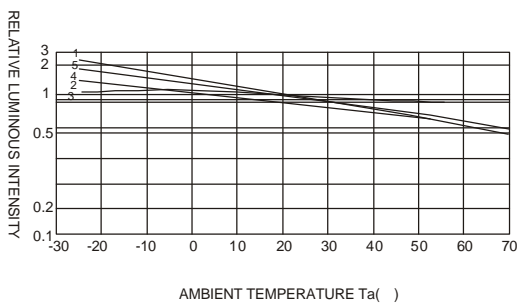
FORWARD VOLTAGE (Vf)
FORWARD CURRENT VS.
FORWARD VOLTAGE



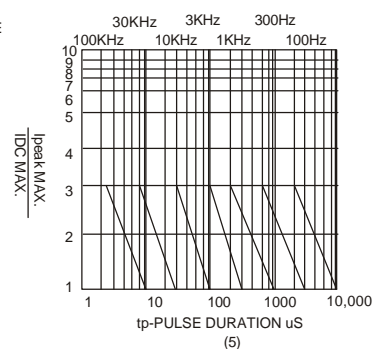
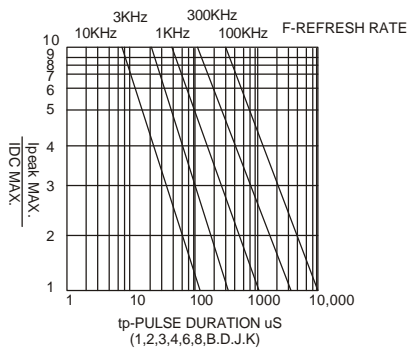
FORWARD CURRENT (mA)
RELATIVE LUMINOUS
INTENSITY VS. FORWARD
CURRENT



AMBIENT TEMPERATURE Ta()
FORWARD CURRENT VS. AMBIENT
TEMPERATURE



AMBIENT TEMPERATURE Ta()



NOTE:25 free air temperature unless otherwise specified

SUPER FLUX LED LAMP, 4PIN LED

BL-FL7644xx

■ **Packing and weighting**

